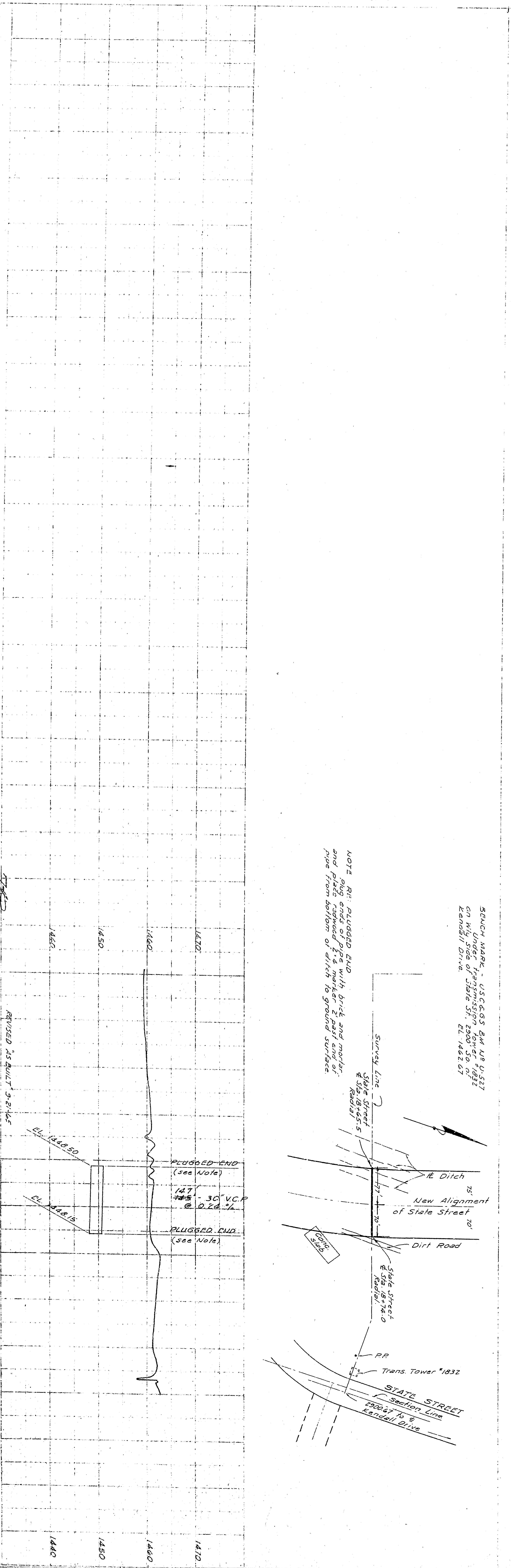
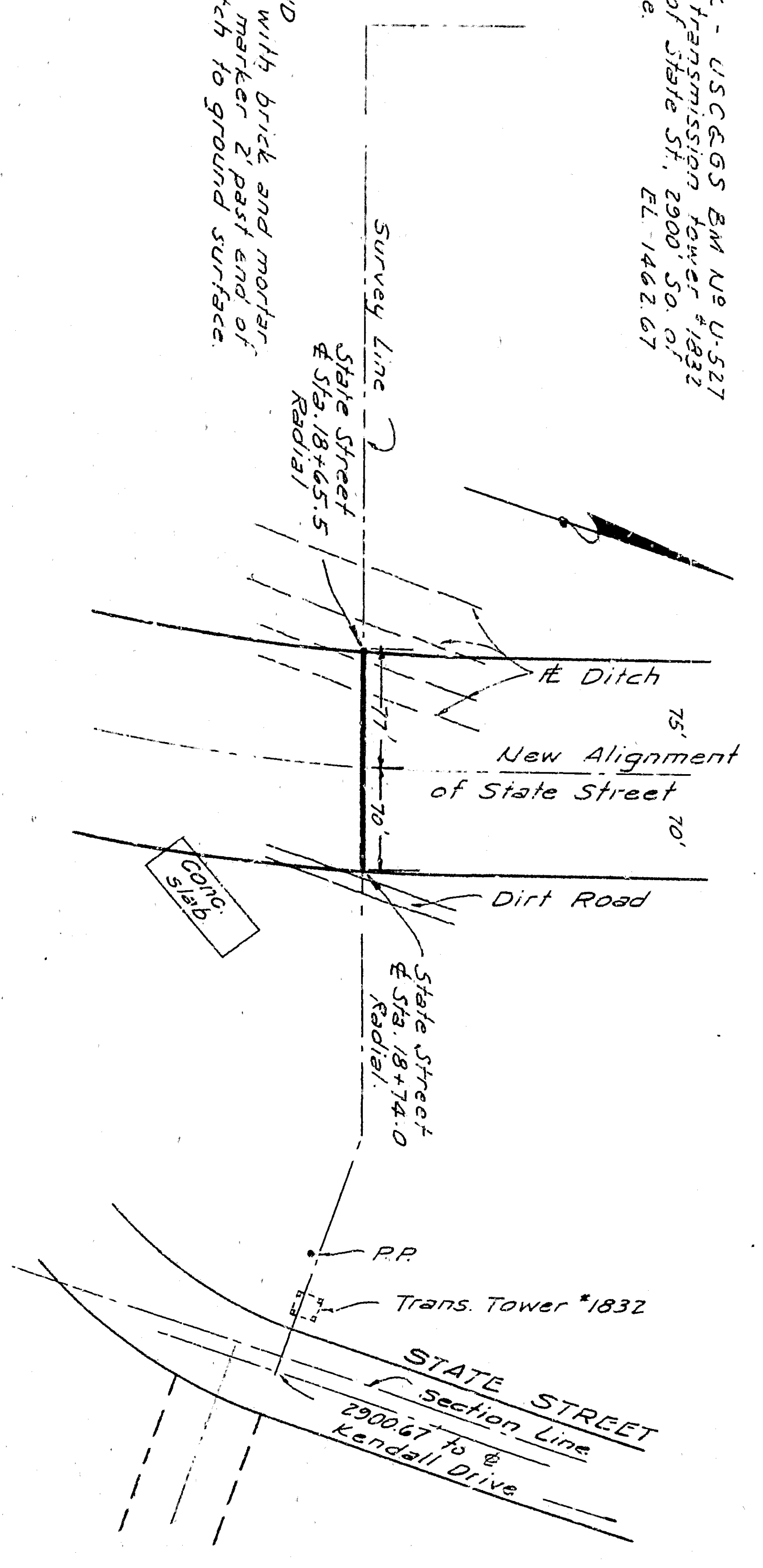


DATE: 1950
BY: [illegible]
PROJECT: [illegible]



NOTE: R.I. PLUGGED END
 Plug ends of pipe with brick and mortar
 and place around 2 ft. marker 2 feet from
 pipe from station of ditch to ground surface.

SURVEY MADE BY USC&GS
 ON THE CORNER OF STATE ST. & 2ND ST. 1892
 KENNELL DRIVE EL. 1482.01



REVISED 25 AUGUST 1950
 PLAN No. 3247
 REVISED
 PLANS & PROFILES ACCEPTED BY STATE ENGINEER
 SAN BERNARDINO CALIFORNIA 7-13-50 SHEET 2